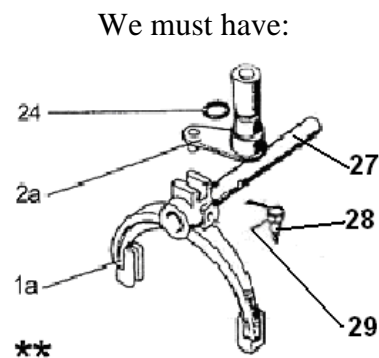
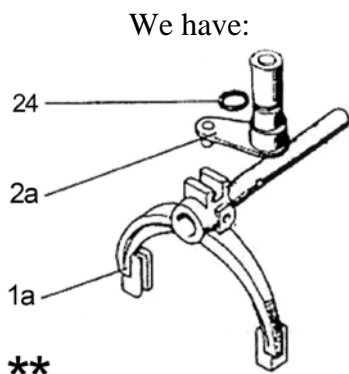


Annotation:

In this bulletin there are the changed data about the design and stock-list of assembly units and parts of gearbox (GB) and its control for tractors BELARUS-920.4/952.4 with motors TCD 2012 L04 2V (63,5 kW)/ 2012 L04 2V (72 kW) and Д-245.43S3А/Д-245.5S3А.

Contents of changes:

Page 44. Fig. 17.3 is to be changed:



Page 45. To be changed:

- in the table title: we have “17 Clutch”; we must have “17 Gearbox”;
- we have in the table

Fig. No	Pos. No	Designation	Q-ty	Name
17.3		80-1723010-Б	1*	Control of reduction gear unit (1, 2, 3, 5, 6, 21, 23-26)
		74-1723030	1**	Cover of reduction gear unit (2a,5, 6, 23-24)
		80-1723065	1	Lever (7, 12, 13, 18-20)
	1	80-1723021	1	Fork
	1a	74-1723020-Б	1	Fork

	12	80-1723060	1	Lever
	13	A61-01-014	1	Handle
...	

We must have

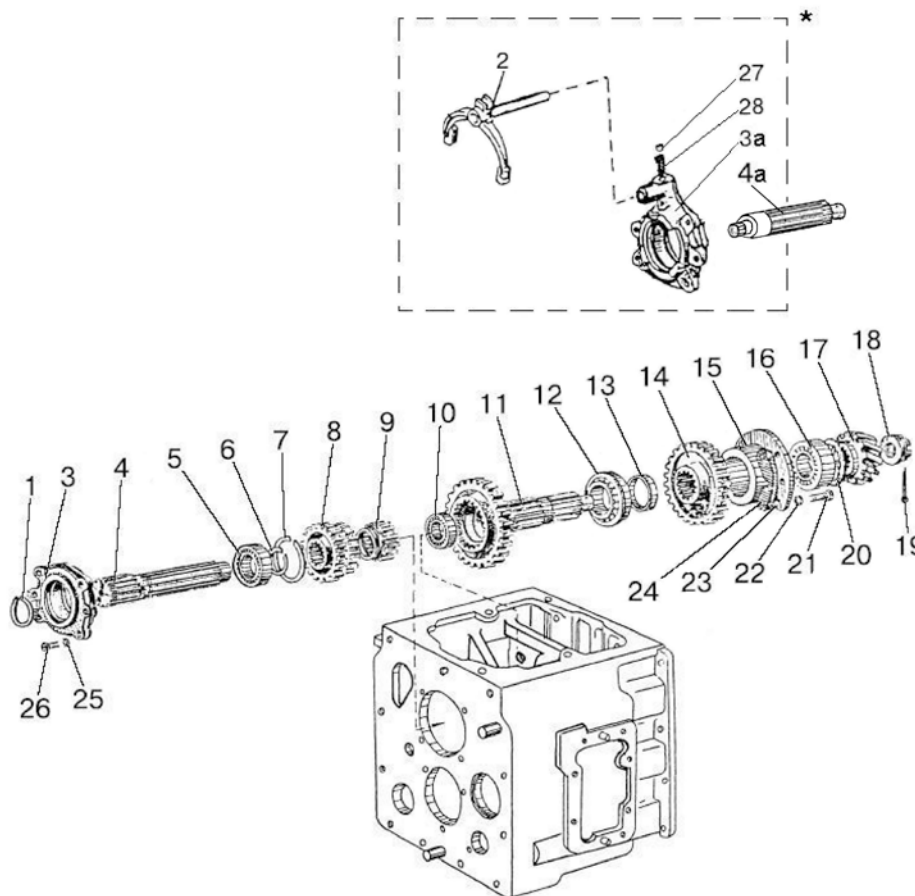
Fig. No	Pos. No	Designation	Q-ty	Name
17.3		80-1723010-Б	1*	Control of reduction gear unit (1, 2, 3, 5, 6, 21, 23-26)
		74-1723030	1**	Cover of reduction gear unit (2a, 5, 6, 23-24)
		74-1723020-Б1	1**	Fork (1a, 27, 28, 29)
		80-1723065-Б	1	Lever (7, 12, 13, 18-20)
	1	80-1723021	1	Fork
	1a	74-1723043-Б	1	Fork

	12	80-1723060-Б	1	Lever
	13	A15.05.020	1	Handle

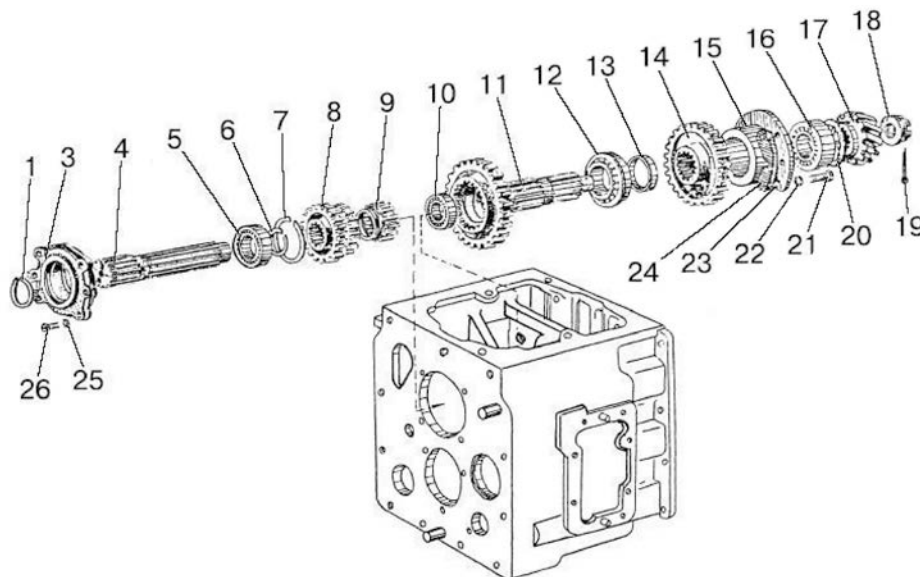
	27	74-1723044-Б1	1	Shaft
	28	220-1702061	1	Bolt
	29	1,6-O-C ГОСТ 3282-74	1	Wire (L=200 mm)

Page 50. Fig. 17.6 is to be changed:

- we have



- we must have



Page 51. To be changed:

- we have in the table

Fig. No	Pos.No	Designation	72-1700010-Б1/-01	Name
17.6		48-1701030-A	1	Primary shaft (1, 3, 4, 5-9)
		822-1701030	-	Primary shaft (3a, 4a, 5-9)
		50-1701040	1	Secondary shaft (10-13)
	1	2С60 ГОСТ 13940-86	1	Ring
	2	74-1723020-Б	-	Fork
	3	50-1701034	1	Cage
	3a	74-1701034-Б	-	Cage
	4	48-1701032-A	1	Primary shaft
	4a	P70-1701032	-	Primary shaft
	5	210АУШІ ГОСТ 8338-75	1	Bearing

	17	50-1701105-Б	1	Gear

	23	50-1701258	8*	Gasket 0,2 mm
	24	50-1701259	2*	Gasket 0,5 mm
	25	10 ОТ OCT 37.001.115-75	4	Washer
	26	M10-6g x25.88.35.019 ГОСТ 7796-70	4	Bolt
27	10,0-60 ГОСТ 3722-81	-	Ball	
28	50-1701184-A	-	Spring	

We must have

Fig. No	Pos.No	Designation	72-1700010-Б1/-01	Name
17.6		48-1701030-A	1	Primary shaft (1, 3, 4, 5-9)
		50-1701040	1	Secondary shaft (10-13)
	1	2С60 ГОСТ 13940-86	1	Ring
	3	50-1701034	1	Cage
	4	48-1701032-A	1	Primary shaft
	5	210АУШ1 ГОСТ 8338-75	1	Bearing

	17	50-1701105-Б	1 ¹⁾	Gear

	23	50-1701258	8 ²⁾	Gasket 0,2 mm
	24	50-1701259	2 ²⁾	Gasket 0,5 mm
	25	10 ОТ OCT 37.001.115-75	4	Washer
	26	M10-6g x25.88.35.019 ГОСТ 7796-70	4	Bolt

The note to the table is to be changed:

- we have:

“* Maximum. Selection.”

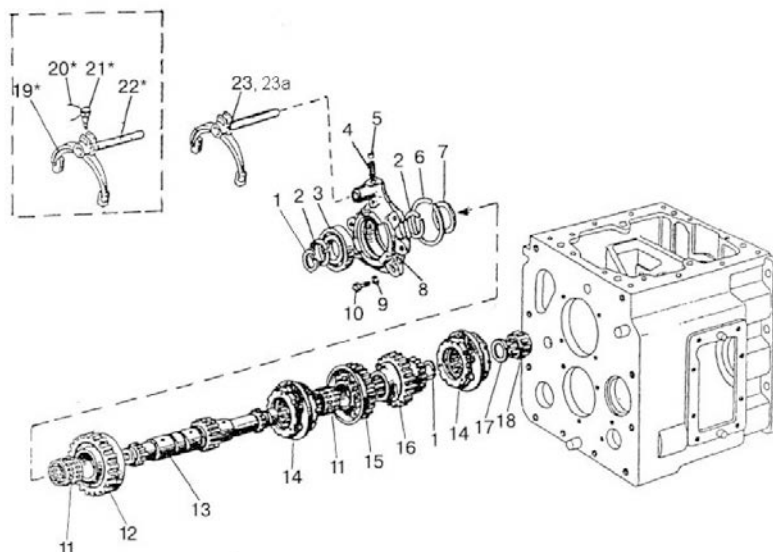
-we must have:

“¹⁾ As spare parts gear 50-1701105-Б is delivered only with gear 50-2403021-Б.

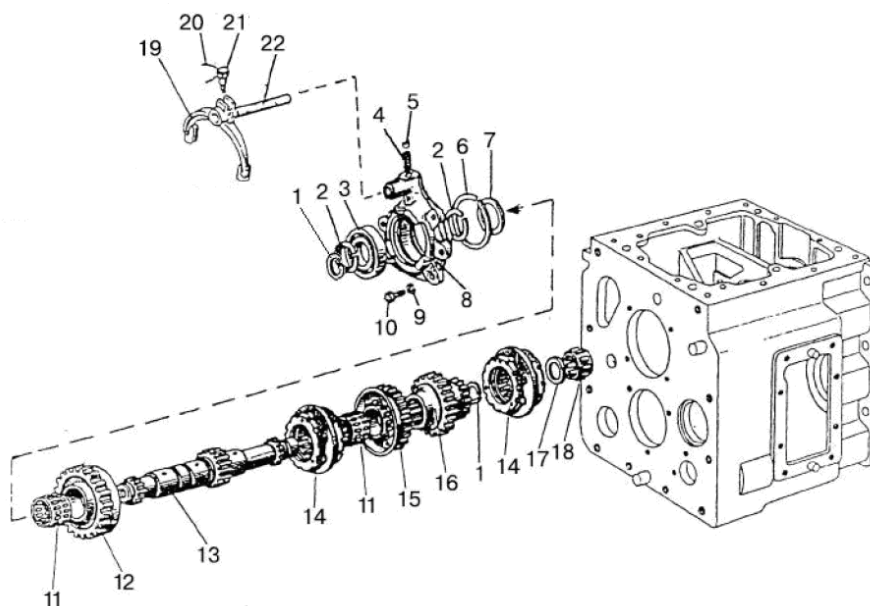
²⁾ Maximum. Selection.”

Page 52. Fig. 17.7 is to be changed:

- we have



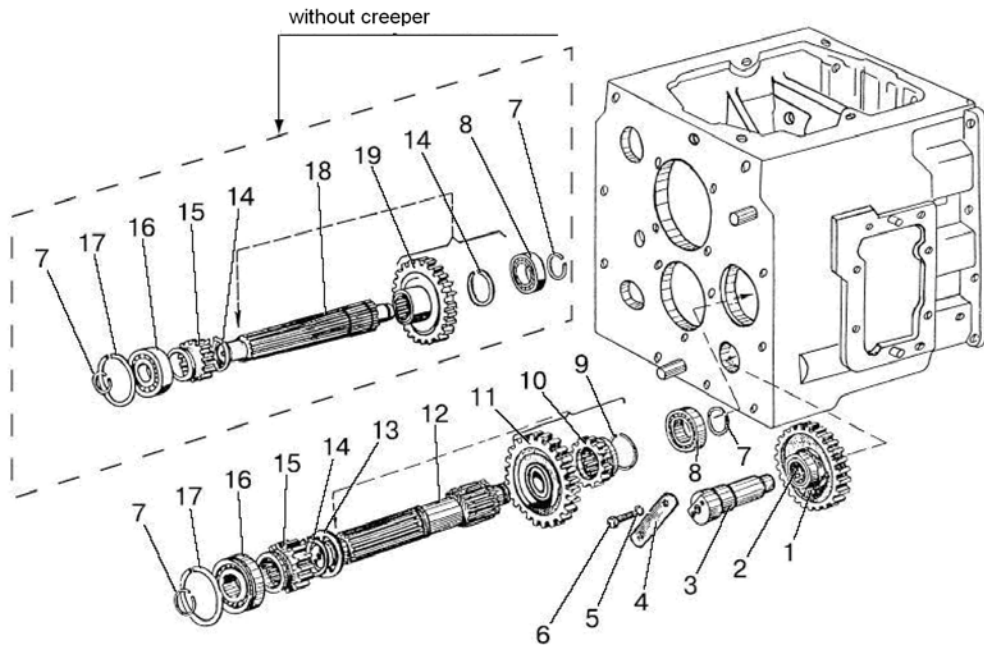
- we must have:



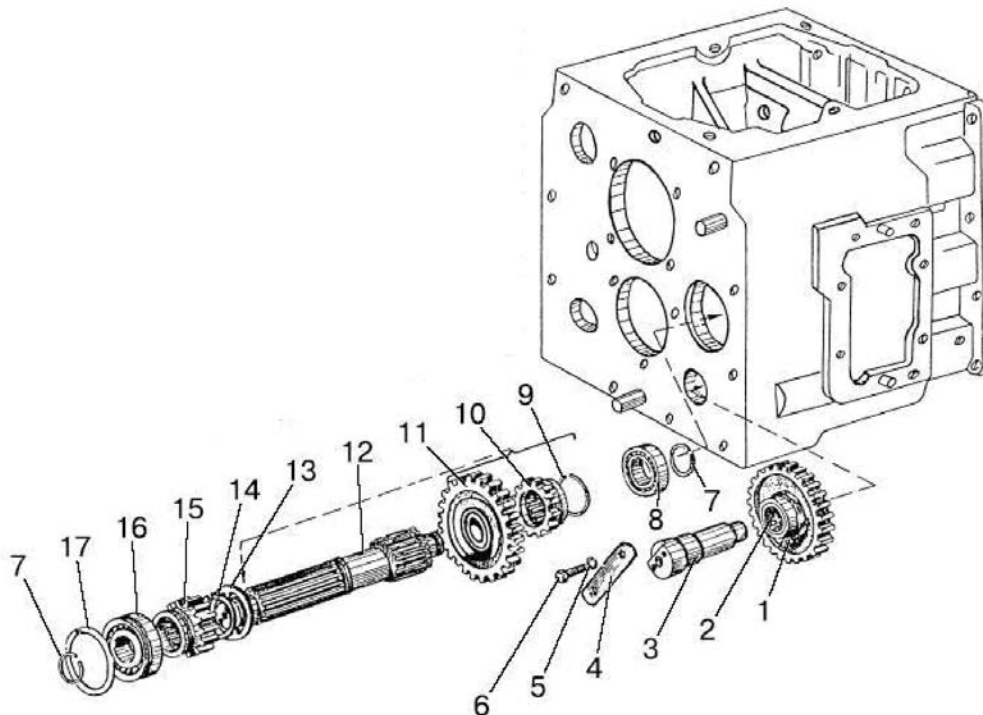
Page 53. The table is to be replaced. We must have:

Fig. No	Pos. No	Designation	74-1700010-01/05 1021-1700010-01/05	Name
17.7		74-1701030	1	Primary shaft (1-3, 6-8, 11-18)
		74-1723020-Б1	1	Fork (19-22)
	1	C40 ГОСТ 13940-86	2	Ring
	2	2С50 ГОСТ 13940-	2	Ring
	3	210 АУШ1 ГОСТ 8338-75	1	Bearing
	4	50-1702148-А	1	Spring
	5	10,0-60 ГОСТ 3722-81	1	Ball
	6	2С90 ГОСТ 13941-86	1	Ring
	7	74-1701026	1	Washer
	8	74-1701034-Б	1	Cage
	9	10 ОТ ОСТ 37.001.115-75	4	Washer
	10	M10-6gx25.88.35.019 ГОСТ 7796-70	4	Bolt
	11	3КК50x57x36 ТУ РБ 00234873.003-99	2	Bearing
	12	74-1701110	1	Gear
	13	74-1701032	1	Shaft
	14	74-1701060-А	2	Synchro unit
	15	74-1701100	1	Gear
	16	74-1701045	1	Gear
	17	74-1701029	1	Ring
	18	822707Д	1	Bearing
	19	74-1723043-Б	1	Fork
	20	1,6-О-С ГОСТ 3282-74	1	Wire (L=200 mm)
21	220-1702061	1	Bolt	
22	74-1723044-Б1	1	Shaft	

Page 56. Fig. 17.9 is to be changed:
- we have



- we must have



Page 57. The table is to be changed:
- we have

Fig. No	Pos. No	Designation	72-1700010-Б1/-01 74-1700010-01/-05 1021-1700010-01/-05	Name
17.9		70-1701080	1	Gear (1, 2)
		50-1701380-A	-	1 st gear and reverse gear shaft (7-9, 14-19)
		70-1701380	1	1 st gear and reverse gear shaft (7-17)

	17	90 ГОСТ 2893-82	1	Ring
	18	50-1701382-A	-	1 st gear and reverse gear shaft
	19	Φ50-1701224	-	Gear

- we must have

Fig. No	Pos. No	Designation	72-1700010-Б1/-01 74-1700010-01/-05 1021-1700010-01/-05	Name
17.9		70-1701080	1	Gear (1, 2)
		70-1701380	1	1 st gear and reverse gear shaft (7-17)

	17	50-1701501	1	Ring

Page 59. The table is to be changed:

- we have

Fig. No	Pos. No	Designation	72-1700010-Б1/-01	74-1700010-01/-05 1021-1700010-01/-05	Name
17.10
	6	70-1701182-Б	1	-	Intermediate shaft
		70-1701182-Б-01	-	1	Intermediate shaft

	31	74-1701057-Б	-	1	Bushing

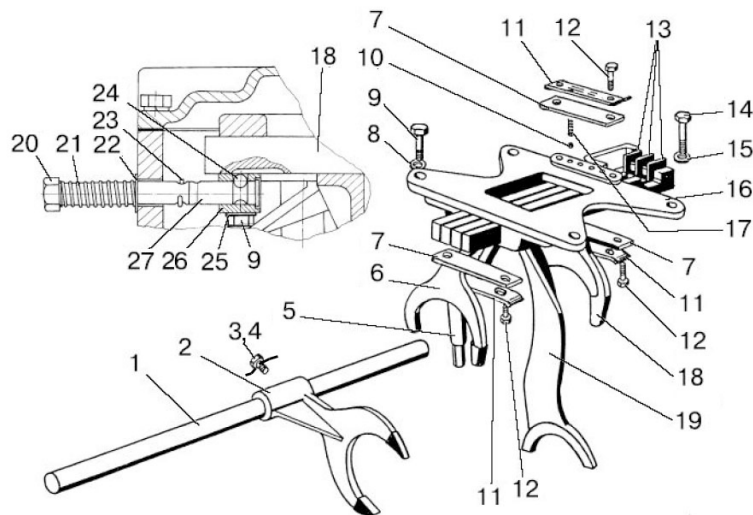
- we must have

Fig. No	Pos. No	Designation	72-1700010-Б1/-01	74-1700010-01/-05 1021-1700010-01/-05	Name
17.10
	6	70-1701182-Б-01	1	1	Intermediate shaft

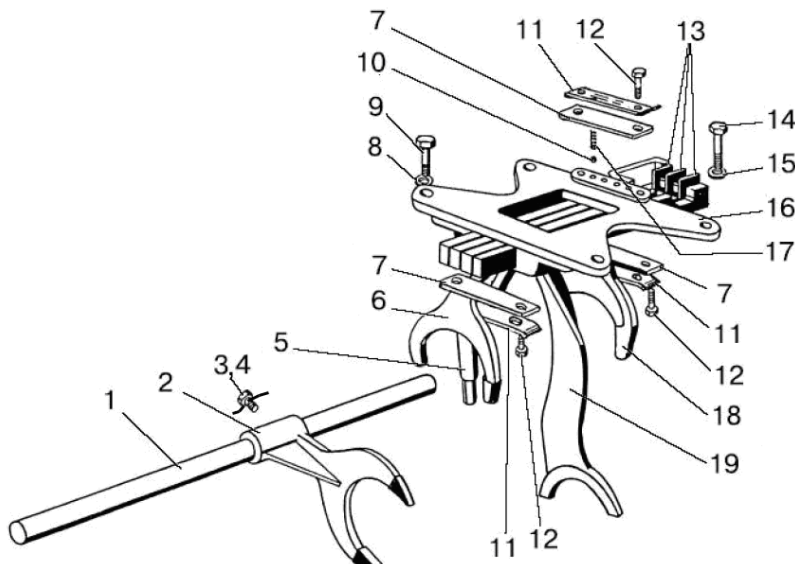
	31	74-1701057-Б or 74-1701057-Б1	-	1	Bushing

Page 60. Fig. 17.11 is to be changed:

- we have



- we must have



Page 61. The table is to be changed:
- we have

Fig. No	Pos. No	Designation	72-1700010-Б1/-01	Name
17.11		50-1702080-A	1	Fork housing (5-13, 16-19)
		50-1702080-A-01	-	Fork housing (5-13, 16-27)
		822-1702080	-	Fork housing (5-13, 16-19)
	1	50-1702063	1	Shaft

	5	50-1702095-A1	1	Shifter arm
		922-1702095	-	Shifter arm

	19	74-1702086	1	1 st gear and reverse gear fork
	20	70-1702073	-	Push rod
	21	70-1702077	-	Spring
	22	70-4605163	-	Washer
	23	2x20 ГОСТ 397-79	-	Forelock
	24	7,938-100 ГОСТ 3722-81	-	Ball
	25	50-1702107	-	Lock washer
26	70-1702072	-	Bracket	
27	70-1702071	-	Push rod	

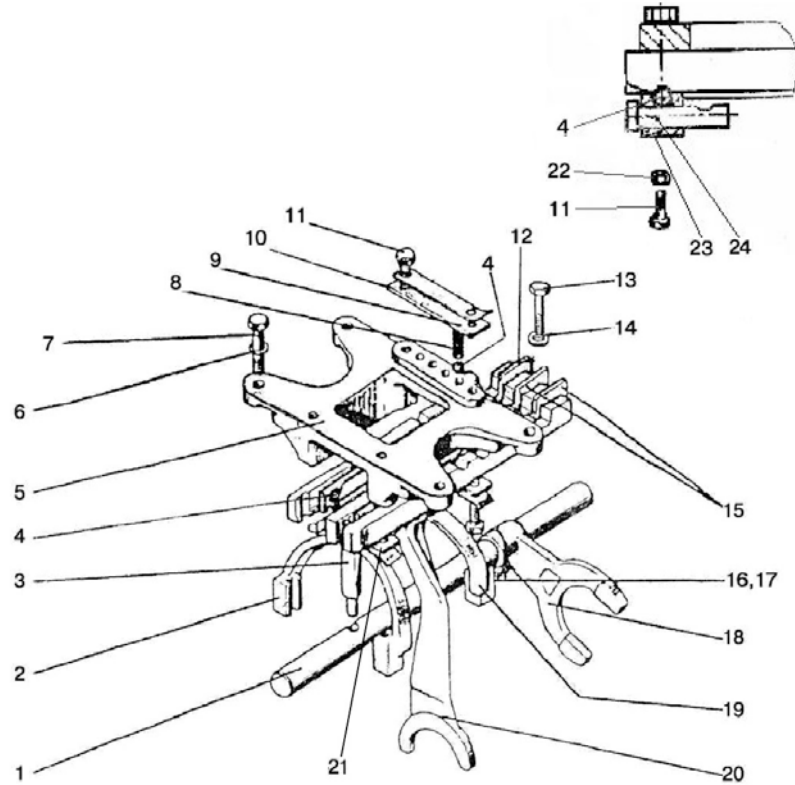
- we must have

Fig. No	Pos. No	Designation	72-1700010-Б1/-01	Name
17.11		50-1702080-A	1	Fork housing (5-13, 16-19)
	1	50-1702063	1	Shaft

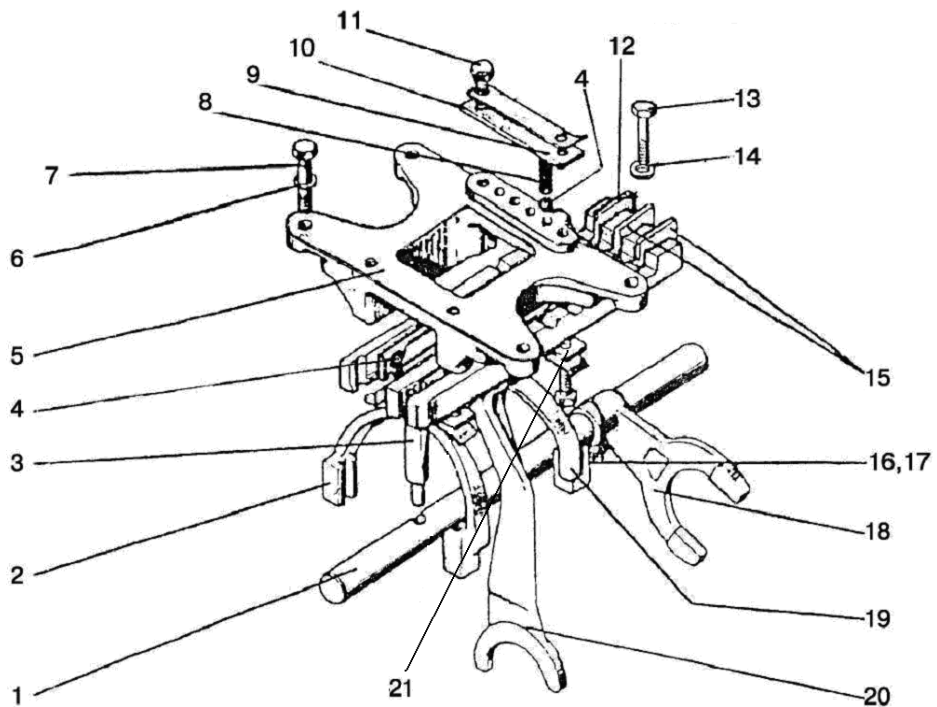
	5	50-1702095-A1	1	Shifter arm

19	74-1702086	1	1 st gear and reverse gear fork	

Page 62. Fig. 17.12 is to be changed:
- we have



- we must have



Page 63. The table is to be changed:

- we have

Fig. No	Pos. No	Designation	1021-1700010-01/-05	74-1700010/-01/-05	Name
17.12		922-1702080	1	-	Fork housing (2-5, 8-13, 15, 19-21)
		922-1702080-02	-	-	Fork housing (2-5, 8-13, 15, 19-20,22-24)
		74-1702080	-	1	Fork housing (2-5, 8-12, 15, 19, 20)
		74-1702080-01	-	-	Fork housing (2-5, 8-12, 15, 19, 20, 22-24)
		74-1702080-02	-	-	Fork housing (2-5, 8-12, 15, 19, 20, 22-24)
	1	50-1702063	1	1	Shaft

	21	74-1702081	1	-	Plate
	22	50-1702107	-	-	Lock washer
	23	74-1702201	-	-	Housing
	24	74-1702202	-	-	Shifter arm
		74-1702202-01	-	-	Shifter arm

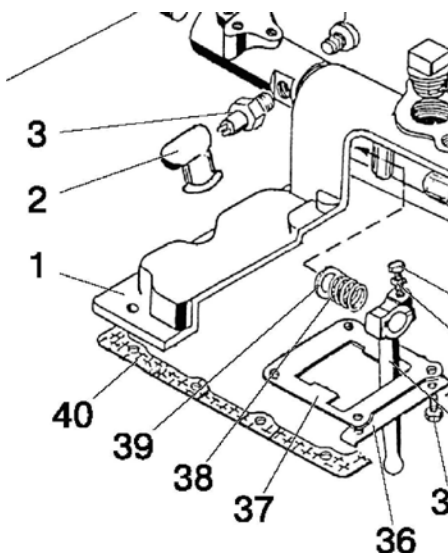
- we must have

Fig. No	Pos. No	Designation	1021-1700010-01/-05	74-1700010/-01/-05	Name
17.12		922-1702080	1	-	Fork housing (2-5, 8-13, 15, 19-21)
		74-1702080	-	1	Fork housing (2-5, 8-12, 15, 19, 20)
	1	50-1702063	1	1	Shaft

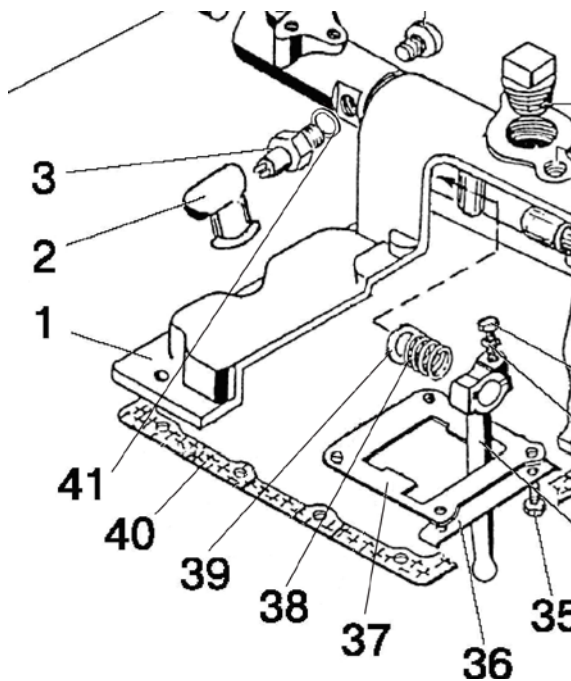
	21	74-1702081	1	-	Plate

Page 64. Fig. 17.3. The graphic is to be changed and pos. 41 is to be added:

- we have:



- we must have:



Page 65. The table is to be changed:

- we have

Fig. No	Pos. No	Designation	72-1700010-Б1	72-1700010-Б1-01	74-1700010-01/-05	Name
17.13		70-1703010-A1	1	-	-	GB cover (1-39)
		70-1703010-A1-01	-	1	-	GB cover (1-39)
		70-1703010-A1-02	-	-	-	GB cover (1-39)
		70-1703010-A1-03	-	-	1	GB cover (1-39)

	3	БК 12-51 ТУ РБ 37334210.015-97	1	1	1	Switch

	12	70-1703220-A	1	1	1	Lever
...	

- we must have

Fig. No	Pos. No	Designation	72-1700010-Б1	72-1700010-Б1-01	74-1700010-01/-05	Name
17.13		70-1703010-A1	1	-	-	GB cover (1-7, 10, 11, 14-16, 19-39,41)
		70-1703010-A1-01	-	1	-	GB cover II (1-7, 10, 11, 14-16, 19-39,41)
		70-1703010-A1-03	-	-	1	GB cover II (1-7, 10, 11, 14-16, 19-39,41)
		70-1703225-A	1 ¹⁾	1 ¹⁾	1 ¹⁾	Lever (8, 9, 12, 13, 17, 18)
		952-1703225	1 ²⁾	1 ²⁾	1 ²⁾	Lever (8, 9, 12, 13, 17, 18)

	3	3710.70	1	1	1	Start locking switch (BK 12-51 ТУ РБ 37334210.004-97 or 151 ТУ BY 700091832.018-2009)

	12	70-1703220-A	1 ¹⁾	1 ¹⁾	1 ¹⁾	Lever
		952-1703220	1 ²⁾	1 ²⁾	1 ²⁾	Lever

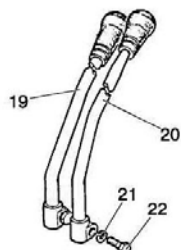
41	50-1702048	3 ³⁾	3 ³⁾	3 ³⁾	Shim	

The note is to be added to the table:

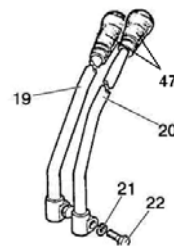
- “¹⁾ Distributor valve of hydraulic system on oil tank
²⁾ Control of distributor valve of hydraulic system with joystick
³⁾ Maximum. Selection”.

Page 66. On fig. 17.14 designation of pos. 47 is to be added:

- we have



- we must have



Page 67. The table is to be changed:

- we have

Fig. No	Pos. No	Designation	1021-1700010-01/-05	Name
17.14		920-1702010	1	GB control (1-18, 21-34, 38-46)
		920-1702010-03	-	GB control (1-18, 21-34, 38-46)
		920-1702090	1	Housing (1-18, 21-24, 27, 30, 45, 46)
	1	922-1702021	2	Bolt

	19	920-1702060/-01	1	Lever
	20	920-1702050	1	Lever

	26	923-1702023	-	Blind plug

	33	50-1702048	3*	Shim

	46	920-1702015	1	Pipe

- we must have

Fig. No	Pos. No	Designation	1021-1700010-01/-05	Name
17.14		920-1702010	1	GB control (1-18, 23-34, 38-46)
		920-1702090	1	Housing (1-18, 23, 24, 27, 30, 45, 46)
		920-1702050-A	1	Lever (20-22, 47)
		920-1702060	1 ¹⁾	Lever (19, 21, 22, 47)
		952-1702060	1 ²⁾	Lever (19, 21, 22, 47)
	1	922-1702021	2	Bolt

	19	920-1702040	1 ¹⁾	Lever
		952-1702040	1 ²⁾	Lever
	20	920-1702030-A	1	Lever

	33	50-1702048	3 ³⁾	Shim

46	920-1702015	1	Pipe	
47	A15.05.020	2	Handle	

The note to the table is to be changed:

- we have: “* Maximum. Selection”

- we must have:

¹⁾ Distributor valve of hydraulic system on oil tank

²⁾ Control of distributor valve of hydraulic system with joystick

³⁾ Maximum. Selection”.